

# nifty

## SD210

**SELF DRIVE  
ACCESS PLATFORM**



**21.30m (70ft)**  
Working height

**12.80m (42ft)**  
Working outreach

**4 Wheel Drive**  
Maximising traction  
over rough terrain

**4 Wheel Steer**  
Superior manoeuvrability on site

**Independent Suspension**  
For fast comfortable  
positioning on site

**Platform Rotation  
& Fly-Boom**  
Improved access to applications

**Turf Tyres**  
Minimise disruption to  
sensitive grass surfaces



[niftylift.com.au](http://niftylift.com.au)



# nifty SD210

The Nifty **SD210** is the ultimate combination of our trailer mounted and self propelled product ranges. With full independent suspension and 4 wheel drive, the **SD210** can cope with a wide range of working environments and still offers the same impressive reach as the **Height Rider 21**. Low weight design makes it economical and quick to transport and 4 wheel steer gives the operator enormous flexibility to manoeuvre once on site. Excellent gradeability coupled with a good travel speed allow the **SD210** to be positioned and set up quickly, allowing the operator to spend more of their time working.

## SAFETY FEATURES

- Pressure sensitive outriggers
- Audible & visual alarms
- Dual controls (platform & base)
- Manual descent with hand-pump
- Lock valves on all hydraulic cylinders
- CE Mark



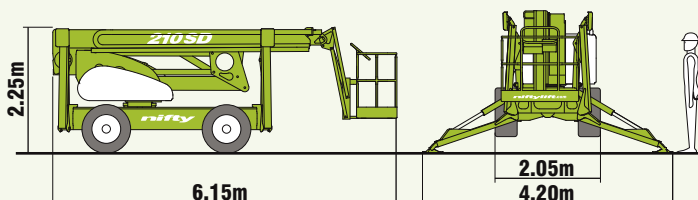
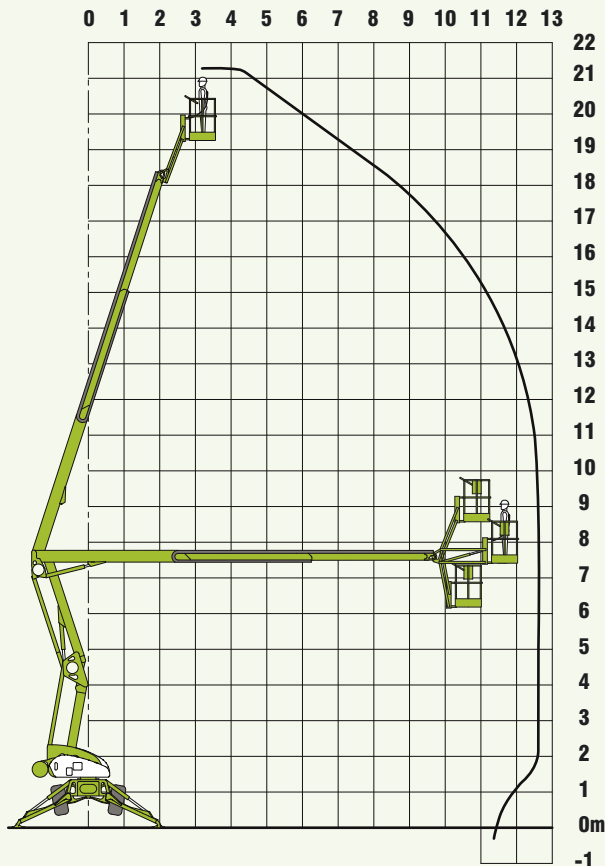
The extra manoeuvrability available from the 4 wheel steer option coupled with the special "Turf Tyres" make the **SD210** ideal for working on sensitive surfaces such as grass.

## SPECIFICATIONS

|                                 |                              |                    |
|---------------------------------|------------------------------|--------------------|
| <b>Working Height</b>           | 21.30m                       | 70ft               |
| <b>Platform Height</b>          | 19.30m                       | 63ft 6in           |
| <b>Working Outreach</b>         | 12.80m                       | 42ft               |
| <b>Slew</b>                     | 360°                         |                    |
| <b>Fly-Boom Arc</b>             | 150°                         |                    |
| <b>Width - Travelling</b>       | 2.05m                        | 6ft 9in            |
| <b>- Working</b>                | 4.20m                        | 13ft 9in           |
| <b>Height</b>                   | 2.25m                        | 7ft 5in            |
| <b>Length</b>                   | 6.15m                        | 20ft 2in           |
| <b>Minimum Weight</b>           | 3,495kg*                     | 8,700lbs*          |
| <b>Turning Radius - Outside</b> | 3.50m                        | 11ft 6in           |
| <b>Platform Rotation</b>        | 100°                         |                    |
| <b>Platform Capacity</b>        | 225kg                        | 500lbs             |
| <b>Platform Size</b>            | 1.50m x 0.70m                | 4ft 11in x 2ft 4in |
| <b>Drive Speed</b>              | 7.5 kph                      | 4.7 mph            |
| <b>Gradeability</b>             | 45%                          |                    |
| <b>Control System</b>           | Fully proportional hydraulic |                    |
| <b>Power System</b>             | Kubota 1505 32Hp             |                    |

\* Weights may vary according to specification, please confirm before ordering.

Due to a policy of continuing development and improvement, Niftylift reserves the right to change any specification without notice. Please confirm exact specification before ordering.



Supplied by:

Manufacturers of trailer mounted, self propelled and vehicle mounted platforms.

**NIFTY PTY LTD**  
11 Kennington Dr  
Tomago  
NSW 2322  
Australia

www.niftylift.com.au  
e-mail: [jking@niftylift.com.au](mailto:jking@niftylift.com.au)  
Tel.: +61 2 4964 9765  
Fax.: +61 2 4964 9710

