



MIKASA TAMPING RAMMER MTX-60E

Mikasa Tamping Rammers are perfectly balanced to deliver hard hitting compaction while ensuring optimised operator comfort and product transportation. Engineered with a Vibration Absorbing System, integrated handle roller and Honda 4-stroke engine, the Mikasa Tamping Rammers offer superior build quality and excellent performance.



Cyclonic air filtration system
For superior air filtration to lengthen service internals and improve engine protection

Handle roller

- Easy loading into vehicles
- Unit can lie down to 90° during transportation

Vibration Absorbing System
Low vibration handles for reduced hand and arm vibration transfer to the operator

Lifting hook
Central lifting hook for easy and safe onsite handling

Fully integrated control switch
Controls on/off switch, fuel tap and engine throttle

Engine guard
Fully protected engine to eliminate damage to critical engine components

Honda GX100 engine
Provides hassle free operation and low engine emissions

POWERED by
HONDA

FOR MORE INFORMATION
CONTACT US ON 1300 353 986 OR VISIT flextool.com.au

EXCLUSIVE TO



MIKASA TAMPING RAMMERS



MTR-40H



MTX-60E



MTX-70E



MTX-85DYC



Model	Operating Weight (kg)	Shoe Size (w x l) (mm)	Jumping Stroke (mm)	Impact Rate (blows/m)	Impact Force (Max) (kN)	Average Travel Speed* (m/min)	Compaction Depth* (cm)	Engine Make & Model	Max Rated Power (Hp)	Average HAV (m/s ²)	Fuel Type	Fuel Tank Capacity (L)	Product Code
MTR-40H	46	100 x 270	40-55	644-695	5.4	10-12	20-30	Honda GX100	3	17.9	P	2	FT201691-UNIT
MTX-60E	64	265 x 340	50-80	644-695	13.6	10-12	50-85	Honda GX100	3	5.2	P	2.5	FT2TX60E-UNIT
MTX-70E	75	285 x 340	50-80	644-695	14.9	10-12	45-70	Honda GX100	3	5.6	P	3	FT2MTX70-UNIT
MTX-85DYC	93	285 x 340	50-80	656-698	15.7	10-12	50-85	Yanmar L48	4.7	18.5	D	3.3	FT285DYC-UNIT

* Travel speeds and compaction depths vary based on different soil conditions. Specifications published are based on average performance results.

REPLACEMENT SHOE

Model	Product Code
MTR-40H	NPS71383-UNIT
MTX-60E	NPS70638-UNIT
MTX-70E, MTX-85DYC	NPS70430-UNIT

TRENCHING SHOE (115 mm wide x 330 mm high)

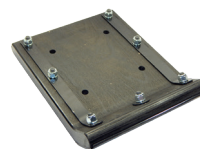
MTX-60E	NPS51907-UNIT
MTX-70E, MTX-85DYC	NPS51919-UNIT

TRENCHING SHOE (165 mm wide x 330 mm high)

MTX-70E, MTX-85DYC	NPS51931-UNIT
--------------------	---------------

WHEEL KIT

Product Code	Operating Weight (kg)	Suits	Wheel Diameter (mm)	Wheel Type
FT201692-UNIT	11	MTX Series Rammers	260	Solid flat free urethane



Replacement shoe



Trenching shoe



Wheel kit

Version 2.0 (April 2022)

EXCLUSIVE TO



This Technical Data Sheet (TDS) summarises our best knowledge of the product, based on the information available at the time. You should read this TDS carefully and consider the information in the context of how the product will be used. Our responsibility for products sold is subject to our standard terms and conditions of sale. Parchem does not accept any liability either directly or indirectly for any losses suffered in connection with the use of the product whether or not in accordance with any advice, specification, recommendation or information given by it.

© This publication is copyright. All rights are reserved. Flextool is a registered trade mark of Parchem Construction Supplies Pty Ltd. Mikasa is a registered trade mark of Mikasa Sangyo Co. Ltd, used under licence.