

PORTABLE GENERATOR SAFETY SHEET

(Atlas Copco P8000)



**PLEASE READ THIS GUIDE CAREFULLY BEFORE
OPERATING THE EQUIPMENT**

IMPORTANT - CONDUCT A RISK ASSESSMENT

Before you commence any work at your chosen work area, you should undertake some preliminary hazard identification and risk control precautions. Ideally more than one person should do this. This is undertaken by:

1. Physically inspecting the work site
2. Reviewing the best way/job steps required to complete the task
3. Reviewing the Safe Work Information supplied with the equipment
4. Reviewing other reference documentation and expert advice.

The hazard identification and control process steps are defined as:

1. Identify the Hazards (eg. 240V power drill use around wet areas)
2. Assess the Risk (multi earth paths - possible electrocution)
3. Select the Control Measure (e.g. dry the area; use an RCD; use a cordless drill etc)
4. Re-assess the Risk (risk of electrocution now negligible). This is undertaken to ensure that the risk control measures adopted have not introduced any new risks to the work area.

SAFETY INFORMATION

Do not use the equipment indoors.

- Keep the unit clean and avoid spilling any combustibles such as gasoline on the equipment.
- Do not operate near water or moisture.
- Do not connect to a home power system.
- Unit must be safely grounded.
- The surface of the generator set becomes extremely hot. To avoid serious burns, pay attention to the warnings.
- The generator produces enough electric power to cause a serious shock or electrocution if misused.
- It is prohibited to use bare wire to connect power supply to the electric equipment directly, use the plug that fits local regulations.
- When the unit is operating, do not touch wire or live parts of the equipment. Never touch the machine with wet hands or electrical shock will occur.
- When the unit is operating, keep children at a safe distance from the generator. When the unit is operating, strictly prohibit the assembling and disassembling of any parts.
- It is recommended to make a tandem connection of a ground fault circuit interrupter (GFCI) when the power supply is out, in order to ensure safety.
- External electric accessory (including cable and plug interconnecting piece) shall have no faults. Electric shock protection depends on the circuit breaker, especially the matching between the breaker and generator set. When replacing the breaker, use only a replacement with the same rating and performance features. Contact a local dealer or the after-sales service center for support.
- In case of using length ening wire or mobile power distribution cabinet, overall length of the wire with a cross section of 1.5mm² shall be no longer than 60m, and 2.5mm² wire shall be no longer than 100m.

PERSONAL PROTECTION EQUIPMENT (PPE)



PROTECTIVE
GLOVES



HEARING
PROTECTION

HELP AND SUPPORT

If the unit does not operate correctly or you are unhappy with its performance, return it to Asset Construction Hire for an exchange, or phone for assistance. Do not attempt repairs yourself.

Asset Construction Hire

Phone: 1300 361 383 or email: office@assethire.com.au

OPERATION MANUAL

A PDF of the full Operation Manual is available at:

www.assethire.com.au/manuals-specs-safety-sheets/

and must be read before using the equipment.

BEFORE OPERATING THE EQUIPMENT:

- Read this Safety Sheet and any other information provided with the equipment, including instructions, decals and operation guidelines.
- Check that you understand how and when to use the equipment, and know how to operate it safely.
- Ensure that it is only used according to the manufacturers and hirer's instructions, and only for work that is compatible with its technical limitations.
- Operate in a clear work area free from nonessential persons, children, animals or hazards.
- Ensure that you have a secure footing and clear access and egress to the work area while on the job.
- Do not operate any equipment if you are tired or suffering any medical condition, or if under the influence of drugs or alcohol which may cause lethargy or dangers to yourself or others.
- Do not use faulty equipment. If in doubt contact Asset Construction Hire.

- Avoid connecting the generator in parallel with any other generator.
- The generator fuel is flammable, generating high temperatures, and can easily cause fire.
- It is strictly prohibited to add fuel while the equipment is operating.
- In case of adding fuel, keep far away from fire sources, and do not allow smoking anywhere near the unit.
- When adding fuel, do not spill fuel on the equipment.
- In case of accidental spills, use cotton cloth to clean it. Start the equipment only after spilled fuel is completely evaporated.
- When operating, make sure there is no flammable substance within a 2-meter range, and no flammable substance should come near the equipment. Avoid placing any flammable materials near the exhaust outlet while operating.
- In case of long-term nonuse, drain the fuel from the fuel tank and store it safely. If you swallow any fuel, inhale fuel vapor, or allow any to get in your eyes, see your doctor immediately. If any fuel spills on your skin or clothing, immediately wash with soap and water and change your clothes. When operating or transporting the machine, be sure it is kept upright. If it tilts, fuel may leak from the carburetor or fuel tank.
- Do not throw the residue fuel or used motor oil into the trash or pour it onto the ground. We suggest you take used oil in a sealed container to your local recycling center or service station for reclamation. This equipment contains high-speed revolving parts, which can cause bodily injury.
- When operating the equipment, do not approach the unit or touch any revolving parts.
- Do not lift or move the equipment while operating. Move it only after equipment has completely stopped.
- When operating the equipment, observe surroundings. Make sure no articles are introduced into the equipment.

PORTABLE GENERATOR BASIC INSTRUCTIONS

(Atlas Copco P8000)

GROUNDING THE UNIT

- Place the unit outdoors, use wire of no less than 2.5mm² to connect the unit and grounding terminal to the ground. One end of the wire is pressed below the butterfly nut of the unit, screwed up tightly, and the other end is connected to the metal rod-shaped piece (such as the iron nail and the opener), and inserted into soil.

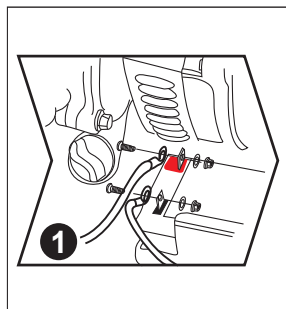
FILLING OIL

- Remove the oil filler cap, fill with the proper type of oil. Use the funnel for filling. If any spills occur, clean the ground thoroughly to avoid slipping.

REFUELING

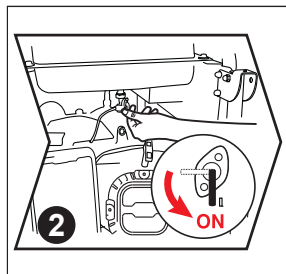
- Open the fuel tank cap and fill tank with gasoline. The fuel gauge will display the level of gas in the fuel tank. Caution: the maximum fuel level must not exceed the inner strainer of the tank when filling.

STARTING THE UNIT



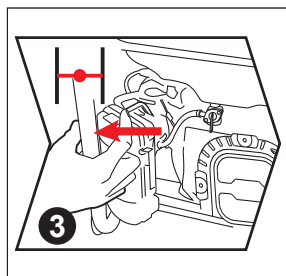
Connect electric battery (electric start only)

Connect the storage battery wire to the storage battery, red for the positive electrode and green for the negative electrode, and be sure to tighten the nut. Do not allow contact between the positive electrode and negative electrode or short circuiting may occur. After connecting, the metal parts of two pieces of wire should be kept at least 15mm apart for safety, and protected by rubber cover.



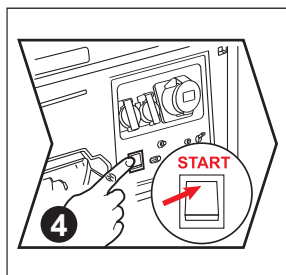
Turn on the fuel valve lever

Turn the fuel valve lever to ON and let the fuel flow into the carburetor.



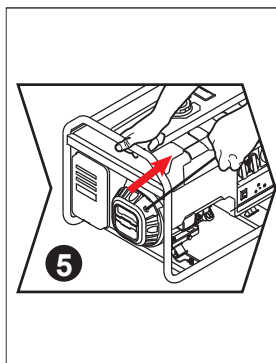
Close the choke valve

When the unit is in a cold state, move the choke valve to the fully closed position, and half-closed position in thermal state. If the generator unit fails to start twice in a row, move the choke valve to the open position and then use the switch or hand-pull starter.



Start the generator

Turn the engine switch on the control panel to ON. Or turn it to START if it's in the electric start position, then generator unit can be started. To extend the service life of the storage battery, do not press the switch for more than 3 seconds and wait at least 10 seconds after pressing the switch before trying again.

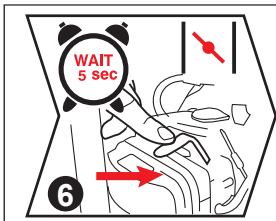


Start the generator recoil start

Start via the pull cord: Pull the cord gently to connect the disc to the starting bowl inside the unit. Pull the cord out in an instant action and the generator unit will be started after doing this twice. If it is not started, please conduct the above operation with the choke valve.

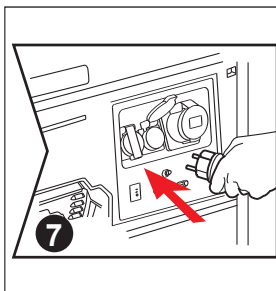
⚠ WARNING

It may be causing the dangers of injury by the sudden change of rotation direction of the engine during operating the recoil starter.



Open the choke valve

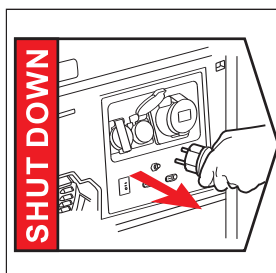
After starting, let the unit run at zero load for 5 seconds and then turn on the choke valve switch.



Connect to load

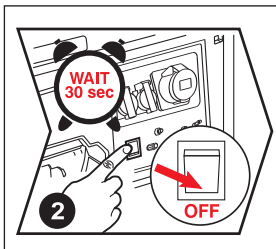
Access electrical equipment and turn the circuit breaker to ON. Please note that when several loads are used at the same time, do not access the next one unless the first one is running normally. The total power of the loads should not exceed the rated power of the unit.

SHUTTING DOWN THE UNIT



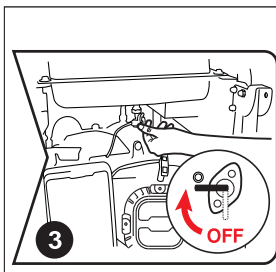
Disconnect load

Disconnect the electric equipment from the generator control panel.



Turn off the engine switch

After 30 seconds of no-load running, turn off the engine switch and the generator unit will be shut down immediately.



Close the fuel valve lever

Turn off the fuel valve lever after the shutdown of the unit.

⚠ WARNING

The surface temperature of the generator unit is still high after shut down. Do not attempt to move or operate the unit until it cools down or serious burns may occur.